



HSWGSA Guild News

ISSUE MARCH-APRIL 2025

The Guild was out in force at Fibre Feast, we had two stalls, one for sales and one for demonstrations, both were full of volunteers and busy all day.



top row: l-r Mignon, Mary and Sharn, Christine selling like crazy and Diedre. Second row: Lindy, Kirsten, Barbara and Enken at the demonstration stall and helping interested passersby. bottom left: Tatiana and above that Barbara with some Gumeracha members. photos courtesy of Felicity and Fergus as well as the editor.





PRESIDENT'S REPORT

Welcome to the April 2025 edition of the Guild News. I would like to thank all the members who assisted in Fibre Feast and the Open Day, without your support we would be a much weaker Guild. I believe both days were very successful and brought in several new members.

We have number of ongoing projects with the Committee, I am hopeful that some improvements to the running of the Guild will have been made over the next few months. There has been a general call for organisations to install a Defibrillator on premises and Robyn has been successful in obtaining a grant which will give us 50% of the cost. So far, we have had no need to use one and lets hope that continues for the foreseeable future.

We will be calling a Special General Meeting for our June Guild Meeting to discuss the increase in fees. This has now become a priority since the general increase in the cost of living and significant increases in our property value and therefore Rateable value and the most significant is the rising Insurance costs. Our Affiliates will also be sharing some of the increase in Insurance costs.

We are hoping the roof repairs will happen soon and possibly some progress on the heating and cooling.

I have had a call from a member requesting a small group be put together to investigate and share some Australia wide textile Exhibitions, should you feel, you could assist with that please let me know and I will forward your details to the member.

Our Birthday Challenge theme this year is 'Year of the Snake' in line with the Chinese New Year, lets hope we have some interesting items to view at our Birthday Lunch which will occur at the May meeting.

We are having some issues with our website so if anyone out there has some technical skills they would like to assist in the maintenance of the website, please get in touch. The Committee has approved that we will have free tea, coffee, milk and sugar available to members attending Groups, Workshops or using the premises, not Guild days where Nancy will continue to provide her delicious baking, tea and coffee. Sue McGough has graciously volunteered to ensure items are available.

Please could members label and date any goods they have in the kitchen, especially the fridge. There are a number of jars of coffee that have been there for a while. Anything not labelled will be removed. We will also be rationalising the crockery in the kitchen, so if you have a particular mug, please label it.

I look forward to seeing you at the Meeting on Saturday 5th April.

Rowena



CALL FOR SPECIAL GENERAL MEETING

We will be having a Special General Meeting prior to our June Guild Meeting for members to discuss and vote on an increase in Membership fees.

This is now required due to increasing costs to the Guild for building maintenance and ongoing utility costs. As you will all be aware the cost of living has increased significantly in recent times and as a Guild, we are not immune. Our Rates and Insurance have been the most significant increases. I have negotiated improved rates for our electricity and along with our solar panels we have halted the increase in our electricity costs.

So, the proposed motion for discussion is Membership Fees and Affiliate Fees are to be altered by, doing away with Early Bird and charging the current cost of \$70 to all members, Affiliates will have an increase to be determined that will reflect the Insurance increase. Renewals will commence in September and all members need to have renewed by 1st November each year. New members will pay a pro rata fee dependent on when they join.

This will bring in some much-needed capital to cover ongoing costs and make some improvements such as heating and cooling.

Since the significant increase in property prices the rateable value is now over \$1,000,000 and Insurance costs have rocketed by 22.7% in the last 6 years. While this may appear to be a significant increase to Membership Fees it is only what we should have been paying if not using Early bird. Because we have all taken advantage of the Early Bird discount the Guild is no longer able to make savings for repairs that inevitably come along in maintaining an older building.

I hope you will all consider this to be a suitable outcome for members, so we are able to continue to maintain the building and improve some services for members.

Rowena Wiggins,
President The Hand Spinners and Weavers Guild of South Australia



APRIL/MAY MEETINGS

The next Guild Meeting will be this coming Saturday, April 5th. Please note that there is a changed time and doors will now open at 9.30 for the kitchen, fibre sales, trading table, equipment room, library and fleece sales. The Little Glory Gallery will still open at 11. The meeting will start at 11 and the speaker at 11.30.

Please be aware that scam emails have been circulating. There is one on display (that a member received) in the dining room. Please be careful and check with people (in person) that emails or messages are from them if you're not certain. Scam messages are unfortunately a part of life now, so stay vigilant. However, this is an example of why we now only use first names in the Guild News, it is a privacy concern and not everyone wants their full name published.



A reminder that Kath is our amazing tour guide. If you are attending for the first time or are not sure where to start you can (of course) speak to anyone, but Kath is our professional. As her badge says ... Trust her!

May is the Guild Birthday Meeting

-Please bring a plate to share for lunch. Nancy and Claire will be in charge of setting up the table so leave food with them. If you can please include a card with ingredients.

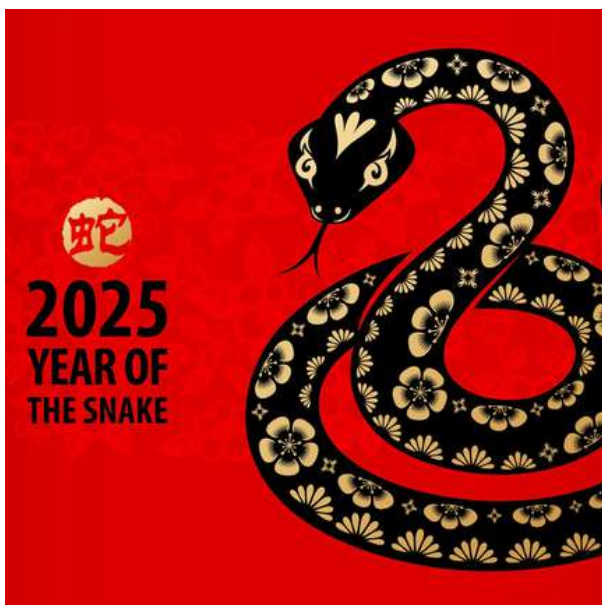
-There will not be a speaker for the May meeting as we will all be busy having lunch

-Birthday hours will be awarded

-There is a **BIRTHDAY CHALLENGE**. This is the Lunar calendar's Year of the Snake, so that is the topic for the 2025 Birthday Challenge: Year of the Snake. The challenge is open to all members, and is voted on by members.

Please wear your **membership card** while at the guild to help everyone learn names, Guild Lanyards are available for sale from the Membership table or, even better show off your beaded, braided and woven creations. Kath is conveniently modelling hers in the picture above.

It will also be a requirement to show your current membership card when making a purchase with a guild discount, a photo on your phone is fine, this will go into effect from June.



This year's Birthday Challenge is 'Year of the Snake; for new members this is your prompt to spin, weave, felt, braid anything inspired by snakes. Bring your entry for display and voting at the May meeting. Below are some ideas for inspiration, with the source.



<https://www.flickr.com/photos/aspinnerweaver/13179572203>,
<https://knithacker.com/2016/05/when-you-knit-this-medusa-headpiece-more-enemies-turn-to-stone-free-pattern/>, <https://imgur.com/gallery/some-neat-needle-felt-work-czxeAkf>

YARN TABLE UPDATE

Hello from the Yarn Table team.

We welcome back in April Tina to help us again, and we are all very excited for her return. The Square continues to be popular, pleased that it makes purchasing quicker. For those who still deal with cash, thank you also for trying to bring smaller notes as I only have a small cash float.

For those who are new to the Guild, we stock a variety of coloured roving which is by Nundle Woollen Mill. It's 19.5 microns, we carry the full colour range. We also have 22 micron natural white roving which dyes beautifully and I can guarantee that, as I dye it often. For the felters I still have a small quantity of natural in 17.5 micron. Small balls of Nundle Cheese are available too.

Bendigo Woollen Mill, has not been producing coloured roving, I check regularly. The little bit of colours we have, once they are gone, they are gone. We do have a stock of Aran which is their natural roving.

Bennett and Gregor roving and batts available, in a variety of natural colours. The only one we do not stock is the white.

In First Edition, we still have plenty of Merino/ silk combinations, and some beautiful dyed silk in a array of colours. Merino/ Alpaca and silk blends as well.

Silk, what can I say about silk. We have Mulberry, Tussah, Muga, caps etc. Currently there are a few skeins of 20/2 and 60/2 silk yarn. Once these skeins are sold we will not be stocking them as they have become too expensive.

Dyes- we carry the full range of Landscape Dyes. Earth Palette Dyes for wool, for applying on clean roving or fleece or using a fixing agent to dye in the grease. Earth Palette cotton dyes, a few boxes in a kit form, which are fibre reactive, not only dyeing cotton but cellulose fibres. Tantech products in the form of Fibre Scourer and for the felters , Felting Finishing & Wool Wash.

Care labels for wool and cotton. Handspun, Handwoven etc.

We have members and non members prices, and that includes the items we restock in The Little Glory Gallery.

In the cupboards we also have huge amounts of rug yarn, most of this is a wool/nylon combination. Most of it has been sorted into colours. Cotton and other fibres on cones are located in the top shelves in the row of white cupboards. I have tried to sort/tidy and bring them to the front of the shelving. If its difficult to reach them, we can get the ladder. Not the ideal situation for those on the shorter side, please ask if you need help.



Above: Nundle 22 micron roving dyed with landscape dyes and handspun. If you have any questions about dyeing, Mary is the person to ask. Her picture is on the front page of this guild news if you're not sure who to approach.

-Mary

FLEECE SELLERS AND SPEAKERS

Month	Fleece Seller	Speaker
April	Lucinvale Coated Spinning Fleeces	Ali G-D
May	Suzie Horne Finnish Landrace (Finn) Sheep	Birthday Meeting- No Speaker
June	Bennett and Gregor	Bennett and Gregor
July	Lucinvale Coated Spinning Fleeces	Suzie Horne -Finn Sheep
August	Rockleigh Alpacas	Rockleigh Alpacas
September	Bennett and Gregor	Skein Machine
October -	Lucinvale Coated Spinning Fleeces	
November	Wonoka Station (New Seller)	
December	Radstock Romney (New Seller) and Judy Roberts Alpaca (New Seller)	Leslie Brewer-Romney Sheep

Finn Sheep is a very old breed that (unsurprisingly) originated in Finland. It is considered to be several hundred years old and has descended from the mouflon that live in the wild on Sardinia and Corsica.

They are medium to large sized animals that are hardy, strong and active and can appear in almost all colours. Both rams and ewes are usually polled and they naturally have very short tails. The breed is notable for its high incidence of multiple births. In most cases, it is common for a ewe to have 3, 4 or even 5 lambs at once. For spinning, Finn is a single-coated medium fine wool. It has a nice amount of crimp and a good lustre, and takes dye beautifully.

Suzie has been breeding and raising Finn sheep for many years, she will be at the May meeting to sell (and to answer any Finn questions!)



Located just out of the small town of Mt Bryan in the Mid North of South Australia Lucinvale Coated Spinning Fleeces run a flock of about 200 cross breed coloured sheep.

The Sheep wear a coat all year round to protect the fleece from dirt and seeds making it perfect for Spinning.

Most sheep are a cross between Corriedale, Romney and Finn making a lustrous, easy to spin fibre.

They come in a range of colours, fleeces are sold by the kilo. Eftpos available.



FEBRUARY MEETING RECAP



left, the show and tell table from the February meeting. far left, Ali G-D brought in the yarn she had spun for the scarf exchange, it will go to Canada when finished. Next are Barbara's tam's for the Alice Springs Beanie Fest. to the right of that is Pat's scarf woven for a friend with their favourite colours in mind. And closest is Shirley's Sur Alpaca felted hat with embroidered flowers and felt leaves.

The gallery will no longer be posting out uncollected payment slips. They will still be stored for up to 12 months. Members will need to come and collect themselves, this change is due to the current cost of postage.



Clarendon Angora were our fleece sellers for the February meeting and were kind enough to stay afterwards to give us a talk. Jacinta and Matt have a farm in Clarendon where they have more than 40 goats.

Angora goats are named after Ankara, Turkey while their fibre is mohair which comes from the Arabic word **مهير** *muḳayyar* meaning select or choice.

Angora goats like to browse when eating, you can see in the picture to the right they're in the olive grove, and all the branches within easy reach have been eaten. Everything on Angoras grows quickly, these girls get pedicures every 6-8 weeks and shorn twice a year. And their hair grows everywhere. Everywhere.

Adult mohair is an average of 35-6 micron while the kid mohair has an average of 26-28.

Jacinta dyes her mohair using natural dyes (right). She's a felt artist (top right) and passionate about promoting the benefits of mohair in textile arts, but also about the welfare of the Angoras in Australia.





MARCH MEETING RECAP



March Show and Tell: Robyn brought in her spindle spun tussah silk scarf (far left and middle). Below are the beanies set to go to the Alice Springs Beanie Festival



Colin Loffer, a shearing and sorting expert and teacher was kind enough to come in and speak to the Guild at the February meeting. He works for ... which offers a 5 day learners program for both people who want to be professional shearers and those with their own sheep. He had all sorts of fleece to display, both sound and unsound, and of course put a fleece in front of spinners and everyone is going to want to touch (bottom right). The talk started with the recent shearing history of South Australia before moving on to the sheep population (at the moment there are about 70 million sheep in Australia, down from 170 million the 1990s).

Because I'm writing this review I'm going to make a list of things that I learnt and found interesting in the talk, in no particular order:

- Mid North SA produces stronger Merino than the superfine of Victoria/Tasmania the scales on wool fibre grow out so for the smoothest finish spin from the cut tip.
- 1 year's growth for a Lincoln sheep is 300mm
- To check the tensile strength of the fleece take a pencil thickness of staple (don't full remove from the fleece) and stretch it using your thumb and forefinger on each hand, really put your shoulders into it
- The Theoretical Spinning Ability of a fleece involves a lot of maths
- The first way fleece is split for manufacturing is whether it goes into the woollen or the worsted tray, and a lot of that split depends on fibre length. >50mm is gets carded, <50mm combed.
- British shorthair fleece is elastic, bouncy, light and ideal for hosiery items.

It was an interesting talk, there's always more to learn and some great audience involvement.





AUS TAPESTRY COMPETITION

The Aus Tapestry competition hasn't had its official launch yet but it is on display in the Holder Hall. The Tapestry Challenge is a yearly challenge of small tapestries based on a selected topic. 2025's topic is 'The Secret Garden' and entries range from literal to esoteric interpretations.

This year saw 33 entries from all over Australia, 10 of which were from South Australia. The official opening is on Wednesday 2/4/25 from 10.30-11.30, and the exhibition will be up until 30/4/25 (more information on the back page).

For more information visit [the website](#) or contact Joan at austapestrychallenge@gmail.com



Top left: 'Door to the Secret Garden', by Pat M, middle 'Behind the Green Door' by Bev B.
right 'The Mystery Within' by Robyn E.
Bottom left: 'Miz B's Phoenix (aka Still Hanging Around)' by Jan B and
middle: 'Persian Garden' by Jan C.
all photos courtesy of Bev B.



Top left: 'Phoenix Rising from the Ashes' by Joan H, middle 'Kelp Garden' by Elly W, and above 'Looking Through the Keyhole' by Dina V Bottom left 'Chihuly Botanical' by Kaaren T, and bottom right 'Sky Bloom' Jan L

2025 Aus Tapestry Touring Exhibition

Month	Place	Organisation
22 March-30 April	Adelaide, SA	Handspinners and weavers Guild of SA
13 May	Hobart, Poatina, TAS.	Handweavers, Spinners & Dyers Guild of Tas.
June	Perth, WA	Handweavers, Spinners' and Dyers Guild of WA
July	Canberra, ACT	Canberra Spinners & Weavers Inc.
Aug./Sept.	Sydney, NSW	Hand Weavers and Spinners Guild of NSW Inc
Sept./Oct.	Melbourne, VIC.	Handweavers & Spinners Guild of Vic. Inc
Oct./Nov.	Brisbane & Gold Coast, Qld.	Queensland Spinners, Weavers & Fibre Artists
December	Adelaide, SA	Return to weavers



OPEN DAY

Open Day 2025...

I planned an Open Day for the Guild in September 2024. It was a combination of members getting together for spin in public day and an open day for the public because I figured 'If no-one shows up at least we'll have a lovely day spinning'. As you know, the public turned up, What relief!

When proposing the idea of another open day to the Wednesday evening group I said that this one would be different, the focus would be getting people who are already fibre lovers in, let's draw them into our web. I proposed (proposed is a very nice word, when really I said) that we would have a demonstration stall at Fibre Feast, that the knitters and crocheters there were ripe for some more fibre arts. I then moved my plans onto other groups in the guild: the felters, and the weavers, and almost everyone immediately reacted with 'yes, what do you want it to look like, what can we do'. It was exhilarating to see people so excited to share knowledge, to share expertise and most importantly (to me) to share their time.

On Open day we had people come, we got more new members than we did last year, we had people sign up to new beginner workshops, and this was my original, planned, measure of success. However, what I took from the day, what stood out on reflection was the teamwork. We got to see and share what other members do. The Felt Collective had an amazing set up and display in the back room, and still had an audience half an hour after everyone else had finished up. The Sun Felters had everyone walking around shaking jars to make felted balls. There were weavers from the Wednesday Weaverbirds, who did an amazing job setting up the looms for maximum space but also usability, and the Saturday weavers who came with different types of looms and finished works to show off. The spinners were chatting to everyone who walked past, and had a fantastic display (if I do say so). I think that everyone came away having spoken to members that they had never met before (I'll take a moment here to mention how easy it was to do with everyone wearing their guild cards), and inspired to try something new.

So thank you to everyone who came, everyone who contributed and everyone who supported the idea. Special thanks to Barbara who didn't realise that she had signed up to be second in charge, to Felicity for the kitchen, to the whole Wednesday night gang for giving up their spinning time to plan and set up, to Kirsten and Mary for their enthusiasm and ideas.





OPEN DAY



Photos courtesy of Brooke, Bev and the editor.

Far right Sharn, Fay, Felicity, Barbara and Val at the end of the day. Near right Pat and Joan in front of the Aus Tapestry exhibition which was very popular.

below are pics from the day





ROYAL SHOW

Handicrafts Competition

It's that time of year again, entries are nearly open for the handicrafts section of the Royal Show. Categories are released and competition opens in 19 days. Just 19 sleeps!

When I was younger my favourite part of the show was the handicraft section. Well, and the woodchopping, and the sheepdogs... The show is the first exposure to fibre arts for many people, and can lead to a lifelong love. When I go to the show now the first thing I look at is still the handicrafts, but now it's about getting inspired by a technique or a colour palette. What hasn't changed is the appreciation of talent and ability and walking away with a head full of ideas.

Last year I entered for the first time, because I can't encourage everyone else to enter and then not do so myself! When I went to drop off the entry I was told that they had judged the woven scarves the day before and the quality of entries was agreed to be amazing. I was told that at least 6 of them would have won in previous years. I want to see that in all fibre categories- let's blow people away with the talent in Adelaide.

[click on this link for last year's winners](#)

[This link will take you to the competition entry forms, they open April 21](#)

Sheep to Shawl

Last year, 2024 we ran a sheep to woven shawl event for the first time as a demonstration at the show. We're hoping to do the same thing again this year, but as a competition this time. If you're interested in being part of a team please reach out and let Ali B know. You can either get a team together (three spinners and one weaver) or let Ali know your interest and we'll put people in teams.

As a reminder, the Sheep to Shawl is a 3 hour competition where spinners start with a freshly shorn fleece and within three hours have a completed shawl, cut off the loom. The Maryland Sheep and wool festival has been running a hugely popular Sheep to Shawl event since 1979, and our rules are based on theirs. For more information [see here](#)





PERSONAL PROPERTY AT THE GUILD

A reminder, In the December-January Guild News, sent out 3/12/24 the committee asked all members who have private property at the Guild to inform the committee by filling in the form below, it is policy that this form be filled out when any personal property is left at the Guild, for any period of time. After six months of no contact with the Guild (represented by the committee) then ownership of any property is considered gifted to the guild. Six months will be 3/6/2025.

The Guild welcomes members who may wish to leave private property, both for their own use and others, at the Guild. However, the committee is required to review all the Private Property left at the guild annually and final approval for Private Property at the Guild rests with the committee. The Guild hall is large but it is not large enough to house equipment for all members. Please also be aware that if you leave personal items at the Guild that they are not covered by the Guild insurance.

Give your completed form to a committee member, leave it in the Secretary's pigeonhole or email the completed form to info@spinweavesa.org If you have done this since the 3/12/24 then thank you, if you have done it prior to this date please do it again, as these records need to be updated.

You can find the form and Private Property Procedure online at <https://spinweavesa.org/private-property/>

Agreement: Private Property at the Guild

I agree to the following conditions for leaving my private property at the Handspinners and Weavers Guild of South Australia:

- a. I understand that the Guild's insurance policy does not cover my property.
- b. I agree that other Guild members may apply to the Guild Committee to use this property in an appropriate fashion if I am not using it.
- c. I agree to remove the property if I cease to be a member of the Guild.
- d. If I fail to remove this item within three months of being asked to remove it, then I agree to the item being gifted to the Guild, at the discretion of the Guild Committee.
- e. I agree to gift the item to the Guild if I fail to maintain contact with the Guild over a six-month period, at the discretion of the Guild Committee.
- f. I agree to inform the Guild Committee within a month of any change to contact details.

Name:

Date:

Description of item left at Guild (Please include brand, markings, size, and any other identifying details):



GUILD GROUPS

The Weaver Birds celebrated a big occasion this month, Jeanette (Nettie) Davidson's 99th Birthday. Jeanette is our oldest guild member, and I am told that her secret is loving her weaving, having played with textiles, not giving up and her children. photos courtesy of Bev.



Show and tell at the Tuesday group below: Susan's felted scarf, Mignon's jumper, Tanya's yarn and an alpaca cowl, Felicity's spun fibre and Marina's bag, hats and scarves.



Felt Collective

Meet on the first Wednesday of the month from 10.30. Bring materials, equipment, lunch. Contact Kirsten kohlhabersurikow@gmail.com

First Saturday Social

After the Guild meeting on the first Saturday for a chat and craft. All welcome; spinning, weaving, knitting, crocheting, felting, braiding or dyeing.

Spin to Make

Meet on the second Saturday of the month. 12-3.

Spinning Get Together

Group meets every Tuesday 9-1. Spinning skills are taught, beginners please arrive at 9.30.

Sun Felters

Meet on the third Sunday of the month from 9.30am. Basic skills required, bring your own materials and equipment. Contact Helen for more information 0428 459 672.

Weavers Anonymous

A problem solving group who meet at alternate Guild meetings or via Facebook.

Weaver Birds

Group meets every Wednesday 10.30-2.30. Bring your portable loom or other equipment or book a Guild floor loom.

Weavers Study Group

A working group at the Guild meeting in Feb and Aug to exchange samples.

Why Wednesday!

Meets every Wednesday 5-8.30. We come directly after work so bring dinner and have a chat before we get started. All crafts welcome, and we're happy to get people started spinning.



FACEBOOK

Due to some recent difficulties members voted to leave the old Facebook page behind and start fresh. Well, I would like to take a moment to announce that the Guild now has a new Facebook page! Please join us. It will be used to stay up to date on groups, workshops and events. It is a public group and can be seen by everyone, member or not so will act as an advertisement for the guild as well as giving information for members.

Our Secretary, Felicity, is group admin but the aim is to have multiple members act as moderators, they will post information, stories, updates and more. It is important that we have a social media presence, as an early point of call for people looking to find and join us, but also as an online social presence for those who aren't able to attend meetings in person.

We are looking for a person from each group to take responsibility for updating facebook. This means that each person should only need to do so once a month. Having several moderators shares the responsibility and this takes the burden off one person being responsible. If you want to be a part of this, or are happy to take on the responsibility, please speak to Felicity, or send a message on Facebook. We're looking to make this representative of the guild as a whole so the more the merrier.

The group has only been active a week and are already gaining traction, thank you to everyone who has been involved so far. Felicity for setting the group up, Brooke for teaching everyone what to do and Sharn for making her first post!



[click on this link or use the QR code on the left to join the group](#)



Spinweave SA

Public group - 38 members



+ Invite

Share

Kveta is a spinner, dyer and artist. You can find her at the Tuesday morning group spinning amazing colour colour combinations combining textures and fibres. She brought this quilt in for show and tell for the February meeting and wrote a few words about it.

Jessica Price made this lovely quilt for Christmas for her step-mother Kveta Deans who is an avid spinner at The Guild. Kveta and Jess made some cyanotype prints on white paper and material using plants from Kveta's backyard and the sun. This process is an early photographic method where you mix two chemicals: ferric ammonium citrate and potassium ferricyanide, to produce a light sensitive medium in water. The sun on the medium produces a lovely permanent blue.

Jess, who likes to quilt, also made some cyanotypes using flowers and weeds from her own backyard in Melbourne. She used upcycled bed sheets and a blanket and made the quilt in a pattern called "Orange Peel" or 'Petal'. The quilt is a reminder of their love and connection, and shared love of crafting.



photos
courtesy of
Kveta





NATURAL DYEING

Jill joined the Guild in 1976 and has been experimenting with natural dyes ever since. She has been generous enough to share her knowledge with us in this regular column, and has gained a following.

The search for blue goes on – but at last there is proof of concept for the yeast/indigo vat. A very pale blue to be sure, but after removing the fruit from the fruit/indigo mix and probably some of the indigo with it, I'm sure the concentration wasn't what it should have been. Additional yeast/sugar was added to the pot and left to "work". Eventually the liquid cleared somewhat to a sort of murky yellow and it was time to give it try. Consequently I only wound off a couple of metres of white yarn from a spare ball, rather than the full 10 grams. Here is the result. The capabilities of my camera have been overestimated, but it really is a baby blue. (Method in "Indigo and the Antiquity of Dyeing" by F. H. Gerber)



Here is a "new" colour tool – you may have found one of these already, but it is new to me.

<https://colorpickerfromimage.com/>

It works by selecting an image from a collection in your computer, by clicking on it - and off it goes to the colour picker on the screen. Then by moving the cursor across the image any colour can be selected. Proportions of the pigments in the colour are given – which I haven't worked out yet! A small square of the colour - more useful, I found because it can be matched to the yarn. All that's left to do is determine the proportions of the colours to be used in the project under consideration. There is a whole page of instructions and explanations which describe the process in much more detail. My image is a section of Eucalyptus tree bark. The chosen colours closely match some of the recent natural dye samples.



The system will work for any project, and any method of dyeing the yarns. Commercial yarns can be selected to match, if that is the preference.

Presently I have no project in mind, so maybe my next step is to work out how many stitches and rows I can knit from a 10 gram sample.

-Jill

MY PROCESS FOR WEAVING A NEW DESIGN

Kate is a master weaver, she recently had an article written about her in the December 'Textile Fibre' Magazine (by fellow guild member Janet). You can find her on Saturday mornings in the middle of the Weavers Anonymous group. She had the great idea to write something about her weaving process for the Guild News.

This is Phoebe's idea. (She wanted me to write something about my weaving process. It will probably bore at least half of you to tears!). I agreed to document 'my next warp'.

Last year I bought 15 cops of very expensive 16/2s silk and linen yarn from Thread Collective. I spent months dyeing and weaving this yarn into what I call the "Stokes Bay Series", five large, framed, wall pieces. On the wall they are 3 metres long x 1 metre high. My one terror was that I would run out of a particular colour. While I kept meticulous records, I knew from past experience that I would never exactly dye the same colour again! Other people may be able to do that.....I can't!

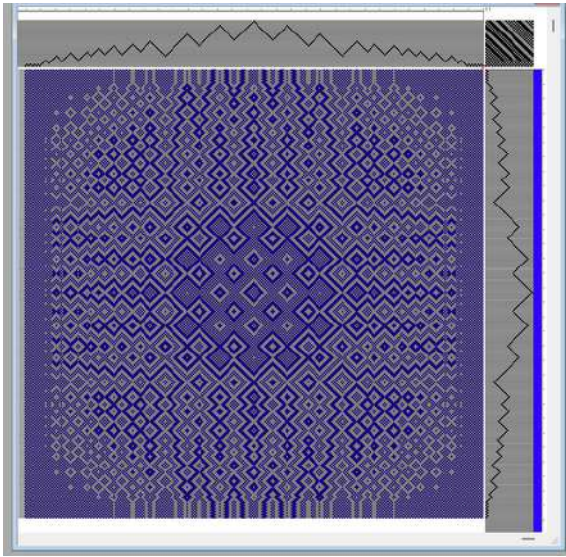
That terror meant I had at least a kg left over! \$400+ down the drain! What could I do with it? I wanted to have something to show for my money rather than left over bobbins and skeins. I have enough of those already. Mostly I had yarns in either a blue colourway or a green colourway. I decided to weave a run of scarves. They are my 'go to' for any new structure, and for experimentation.....and for using up yarn apparently! Remember I was a production weaver, so I tend to think biggish. I wound a warp of 13 metres to make 5 scarves - woven length per scarf, 80 inches plus fringes. (Yes, I know I jump between metric and imperial, and it does everyone's head in!!! Sorry, but there is method in my madness. When you weave you lose a considerable amount in take up. About 10%. Swapping between metric and imperial seems to take care of that maths!)

As far as I can tell we all start with parameters. Either we haven't got quite the correct yarn in type, colour or thickness! How many times have we have wished "if only I could afford cashmere!!! Or - like in my case - you try not to have wastage. So how did I use the yarn? I decided to just wind the warp in a progression of blue colours, from a silver blue through to a dark blue green.....just to see what happened. Some of the colours became a bit too dominant for my liking, but this was an experiment, so I continued. Besides I've learnt that while I may not be overly fond of a colourway other people may love it.

I wound the warp and ran out of blue. Much to my disgust I had to over dye some of the yarn so that I could get the width of the scarf I had decided to make. I was aiming for 16 inches in width but had to settle on 15.5. At least I used all the blue silk/linen! One aim accomplished.

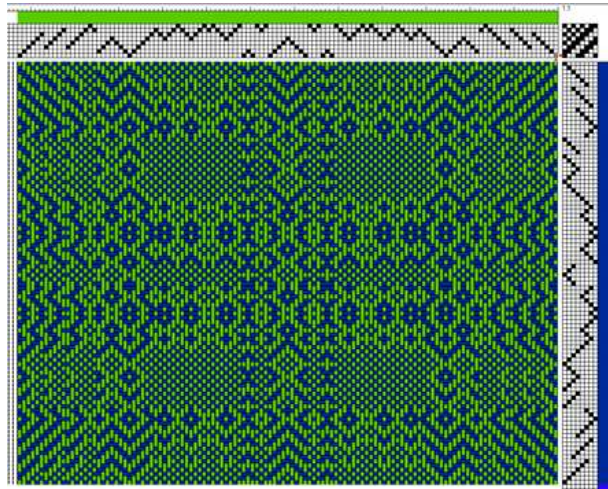
Next to settle on a design. I had a fair idea what I wanted as I had done something similar before. This part of the process was done 'sort of' before and during the process of winding the warp. I use the weaving design program Fiberworks. I sat down one night and played by drawing lines.

Basically, my design is a return twill. The fun comes when you alter the tie up and the treadling. (In each one of my scarves I altered the tie up). I weave on a 32 shaft loom but the same principle can be used on an 8 shaft loom. The design lines in the fabric are less detailed with 8 shafts.



Here's an example of the 32 shafts design. Altering the design is so easy. You just draw more/less lines in the tie-up. Two of the shafts were used as boarders.

Right is 8 shafts design. (I have not woven this, just played with it on the computer). But again you can alter the design by altering the tie-up. I used the 'weave as drawn in' function which sets the lifting plan as the treadling. Then I removed some picks in the treadling.



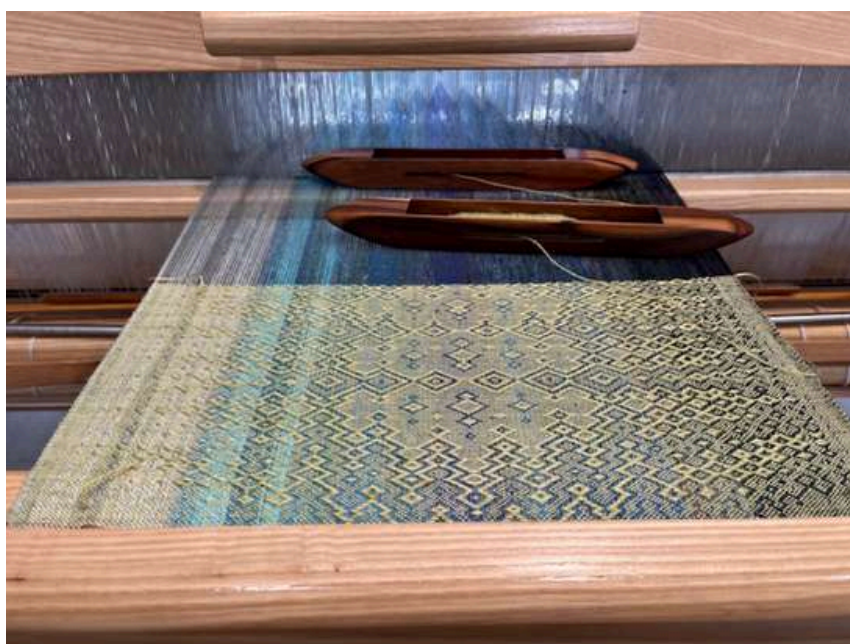
Weaving the scarves didn't take that long. Overall I quiet like the product but believe the warp should have been slayed closer together. I slayed the 16/2s at 20 to the inch, it would have been better at 22 or 24 ends per inch. I have produced a weft dominate scarf; it should be 20 warp end 20 weft ends per inch. Mine is 20 warp ends to 23 or 24 weft picks per inch. I contemplated re-slaying but decided I would lose too much width in the finished scarf. In most of the scarves I didn't have enough weft to complete the scarf so I mixed similar dyed skeins. I wove until I was nearly at the end of one dyed lot then every couple of picks I introduced the next shade, decreasing to every other pick. Then slowly removing the first shade. I was pleased with how this worked. If you look closely, it is evident that one end of a scarf may be different in shade to the other end.

I wove my 5 scarves however one was a tad short. I ran out of a weft colour and I didn't have any close shades that I could mix. So, I made this one into a cowl!

I finished them by hand washing, then running them through the rinse cycle in my front-loading washing machine and then steam pressed them while slightly damp.

I love the yarn, but I don't love the fluff that accumulates in the studio while weaving. The linen seems to shed and makes an unholy mess. Quite how Swiss Mountain Silks spin these 2 fibres together I'm not sure, but when it is dyed you can see the different fibres. Linen needs to be dyed using Fibre Reactive dyes. Silk is more successfully dyed using Acid Dyes, which caused me some headaches. A couple of the colours had to be dyed twice using both dye methods!!!

-Kate Holmes



Kate will bring the scarves for display at her next meeting

FROM THE LITTLE GLORY GALLERY

Glenda is on the Little Glory Gallery committee and gives us updates on the gallery. She is a spinner and if you have any questions on using handspun yarn on a knitting machine hunt her down.

The shop, The Little Glory Gallery has been busier than usual with new customers - generated from various activities such as Fibre feast in early March. A number of 'hands on' opportunities were provided to participants. This same theme prevailed at our open day where members, non members and new members alike rubbed shoulders with practitioners to learn about felting, spinning, use of drop spindles and weaving. We all left the guild feeling very inspired. I went home to review and reshelve wool, launched into some dyeing activities while the warm weather lasts and managed to source some simple beanie patterns for machine knitting.

The photos provide an update on shop stock and while the shelves appear quite full, it's useful to remember that autumn is just around the corner- while we don't have the precipitation experienced in the east or north, we know it will be getting much cooler in the evenings. Grab those needles, some yarn that excites your creativity and start on smaller (easily completed) items. The gallery is always in need of beanies and we cater for male and female customers. There is always a need for socks - and these should be knitted for adults and children.





PROPOSED WORKSHOPS 2025

The guild has a smorgasboard of workshops coming up, there should be something to interest everyone on this list.

Email: hswgworkshopsa@gmail.com or speak to Sharn in person at the Workshops desk at the monthly guild meeting.

APRIL

Sunday 6th Mosaic Magic (mosaic knitting) with 'Dear Pru'-**FULL**

Wednesday 30th Learn to spin Beginners 8-week course

MAY

Sunday 4th Bread & Jam taster with 'Dear Pru'. (hat featuring basic brioche & colour work. Pattern included)

***Tuesday 6th** Weave a Hat on a Simple Loom with Marina Morach.

Sunday 18th Beginner's Felt- Phone/Glasses case with Helen Vonow.

JUNE

***Saturday 7th** Learn to Use a Mini Loom with Enken Hagge. EOI

***Saturday 14th** Learn to Use an Inkle Loom with Phoenix Blackdove.

***Saturday 21st** Basics of Spinning in One Day with Bella Head EOI

Saturday 28th Natural Dyeing with Andy Barrett.
MEMBERS ONLY

JULY

Sunday 13th Needle Felt a Sheep with Louise Davies (suitable for beginners)

***Saturday 26th** Wet Felt for Beginners - Introduction with Lindy May EOI

AUGUST

Saturday 16th Learn to Spin Silk with Andy Barrett

SEPTEMBER

Saturday 27th Learn to Drop Spindle with Andy Barrett (suitable for beginners).

***NEW WORKSHOPS**

EOI -taking Expressions of Interest. Register your interest to be emailed once details are confirmed.

Learn to Spin

Wednesday 6-8pm 8 week course
30/4/25- 21/5/25

A comprehensive range of skills and topics will be covered to provide a solid base of knowledge to begin your spinning journey.

Learners can choose to complete the entire eight week course, only block 1 or only block 2. Block one is absolute basics while block 2 builds on these essentials. Each will have a different focus and teacher.



BLOCK ONE

30/4/2025 – The Wheel

7/5/25 – Short Forward Draw 'The Inchworm'

14/5/2025 - Plying and finishing a skein

21/5/2025 – The joys of raw fleece

BLOCK TWO

28/5/25 - It's all in the preparation

4/6/2025 – Different spinning and plying techniques

11/6/2025 – Sheep breeds

18/6/2025 – What's next? How to make the most of your handspun and spinning with purpose.

Handspinnners and Weavers Guild SA Beginners 3-D Wet Felting

Sunday 18th May 2025
10am-1pm
With Helen Vonow



Registration closes 5th May 2025

Learn basic 3-D wet felting techniques using a resist and a mould to shape

These techniques can easily be applied to make larger items such as hot water bottle covers, bags and hats.

Learn the basics whilst making a felted cover for your phone or a case for your glasses. All materials supplied.



If you have an idea for a workshop that you would like to teach please contact Sharn. She will send you all the details and can discuss your ideas further.

Weave a hat on a simple loom

Registration closes 22nd April 2025

Learn how to warp and weave a beret style hat using a simple home made loom and a tapestry needle. An opportunity to use the leftover balls of yarn in your stash to create a colourful accessory for the coming cooler months. Suitable for beginners, no previous weaving experience required. Marina will explain how to create the loom, provide written instructions and a stencil to make more at home.

Cost members \$30, affiliate members \$35, non—members \$40 . Kit \$5.



Bread & Jam Beanie Taster with 'Dear Pru'

Sunday 4th May 2025
1-4pm

This workshop is designed to 'taste test' the Bread and Jam Beanie patter. Let the designer, Pru Raymond, help you to discover the skills required to complete this project successfully, including tubular cast on, single colour brioche in the round and stranded colourwork skills. A printed copy of the published patterns and a digital download code will be provided as part of your workshop materials.





DATES TO REMEMBER

April	<p>5 April Guild meeting 6 Mosaic Magic Workshop 18 Good Friday 20 Easter Sunday 30 Learn to Spin 8-week course starts</p>
May	<p>3 May Birthday Guild Meeting 4 Bread and Jam Taster Workshop 6 Weave a Hat Workshop 10 History Month Spin in Adelaide Arcade 18 Beginners Felt Workshop</p>
June	<p>7 June Guild Meeting 7 Learn to use a Mini Loom Workshop 14 Learn to Use an Inkle Loom Workshop 15 Gumeracha Group Open Day 21 Basics of Spinning Workshop 28 Natural Dyeing Workshop</p>
July	<p>5 July Guild Meeting 13 Needle Felting Workshop 26 Wet Felt for Beginners Workshop</p>
August	<p>2 August Guild Meeting 2-3 Aldinga and Sellicks Spinners Group Open Weekend 16 Learn to Spin Silk Workshop 30 Adelaide Royal Show starts</p>
September	<p>6 September Guild Meeting 7 Adelaide Royal Show finishes 27 Learn to Drop Spindle</p>
October	<p>4 October Guild Meeting</p>



May is History Month in South Australia. To celebrate, last year, the guild took spinning to the streets. Well, to the hall of Adelaide Arcade (left). We're doing the same this this year, on May 10 the guild will spin in public in Adelaide Arcade.

If you would like to join in the fun please speak to Barbara (you can find her photo on the front page of this News) or email hswgnewssa@gmail.com. We need to know numbers and members ahead of time to organise space and furniture. Please also remember that is History week so the more historical wheels the better (including drop spindles, the most historical wheel!) and dressing up is absolutely encouraged.



NOTICEBOARD

Weaving Classes with Bev Bills

Beginners to advanced 2, 4, 8, 16 shafts, inkle, rug and tapestry weaving.
 Various yarns available, wool cotton, some linen and seine twine for tapestry weaving.
 Classes at Studio B, 5 Whaddon Rd, Brooklyn Park, Mon 9.30-2.30, Sat 1-4.
 Contact Bev on bbills@bigpond.net.au, 0415 616 900 or 8443 6102

Gumeracha Spinners and Weavers

Invite You To Their

Sunday 15th June 2025, 10am-3pm
Gumeracha Town Hall, 45 Albert St, Gumeracha
FREE ADMISSION

Vendors selling hand-crafted products, yarns, fibres, fleece, equipment. Spinning and weaving demonstrations throughout the day.
 Eat Local: The Good Pantry will be open all day (opposite the pub)

CITY OF ONKAPARINGA

City of Onkaparinga
Beanies to Berets Exhibition 2025
 Friday 20 June – Monday 4 August

Calling all textile artists - it's time to start preparing for the Beanies to Berets Exhibition!

Oil your spinning wheels, get your yarn out, and let the creative fibres flow! Whether you're crocheting, knitting, felting, weaving, sewing, and anything in-between, it's time to seamlessly blend your talent into something truly spectacular.

So, grab your tools of choice, get those ideas woven together, and let's make this exhibition something sew-perb!

New artists welcome.

Two competitive categories return:

- Quirkiest Beanie/Beret/Hat (because weird is wonderful)
- Most Flamboyant Tea Cozy (for those who love a bit of drama with their tea)

How to register as an artist
 Fill in our online form here: [Beanies to Berets exhibition submission 2025](#)
 Download and fill in the following forms: List of works, Creditor form (so we can pay you for sales) and, if you don't have an ABN, the Statement by a Supplier form.

Before you deliver your submissions make sure you: create a tag for each piece with the corresponding number from your List of works. Then add further information for our visitors like medium and price.

There is a 25% commission on all sales, please factor this into your pricing. Prices on the List of works are final.

How to apply for a Textile Market stall
 Fill in this form: [Beanies to Berets Textile Market Application Form 2025](#)

Key dates:
 Applications – open now
 Exhibition dates - Friday 20 June – Monday 4 August
 Group delivery from: Spinners and Weavers, South Road Hindmarsh – Saturday 7 June
 Hand delivery to Arts Centre Port Noarlunga from Tuesday 10-Saturday 14 June during opening hours
 Postal deliveries must be received by Friday 13 June
 Return of unsold works to Spinners and Weavers, South Road Hindmarsh – Saturday 6 September
 Textile Market – Saturday 21 June, 10am-4pm

Your tag should look like this:

Your Name
Item number
Medium/ description/ materials
Price: \$

The Handspinners & Weavers Guild of SA Inc



"The Secret Garden" Aus TAPESTRIES

By Tapestry Weavers from Australia

Launch: Wednesday 10.30am -11.30am, 2nd April 2025



Kelp Garden by Ely Webb (SA), Whispering Wisteria by Nina Dang (Qld)

Join us for Morning Tea 10.30 – 11.30am

Guests: Rebecca Evans & Ingrid Goetz from Decorative Arts, Art Gallery of SA
 (after Radical Textiles at AGSA)
 Rebecca will talk about the tapestries in "Radical Textiles"

All welcome

A chance to view the Aus Tapestries before they go on tour around Australia.
 And to hear from the SA tapestry weavers about their work.
 The tapestries will arrive back in Adelaide toward the year's end.

The tapestries will also be on display for HS & WG Open Day Sat 22nd March 10.00 – 3.00pm
 and on display till Wednesday 30th April.

Available for viewing during Guild group days or during opening hours of the Little Glory Gallery, Wed & Sat 11 – 3pm -
 entrance through Little Glory Gallery, 196 South Rd, Mile End. 5031
 Where: Guild Hall - Handspinners & Weavers Guild Hall,
 196 South Road, Mile End SA 5031

Enquiries: Joan Huxtable, peicanlagoon@internode.on.net or Bev Bills
bbills@bigpond.net.au or 0415 616 900



Government of South Australia

This Guild News was Kindly printed by the Hon. Tom Koutsantonis MP, Member for West Torrens